

Morecambe Offshore Windfarm: Generation Assets Environmental Statement

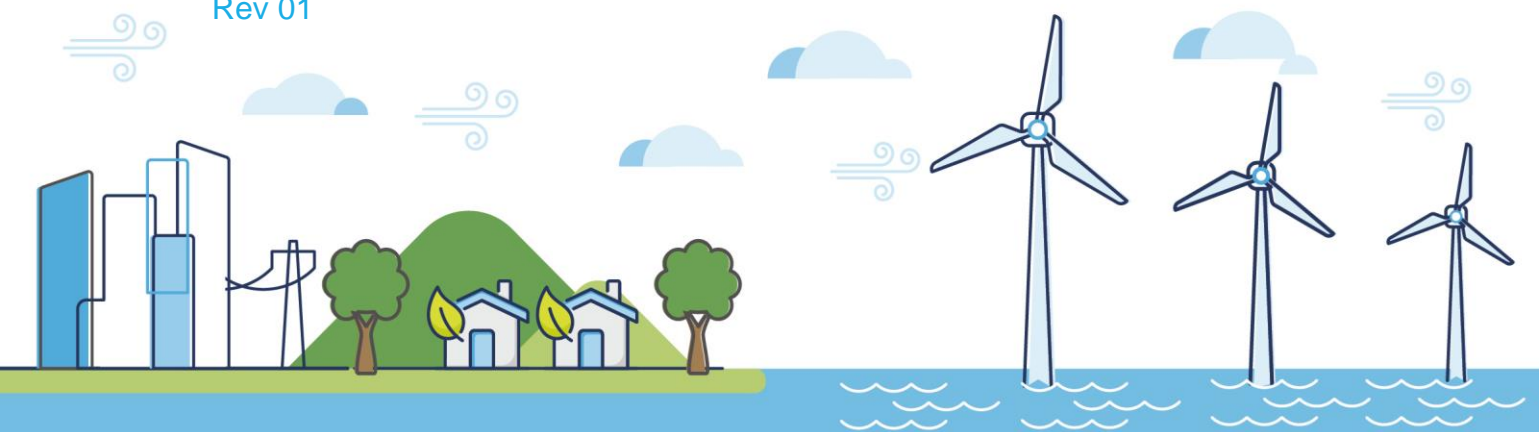
Volume 5

Chapter 13 Commercial Fisheries Figures

PINS Document Reference: 5.3.13

APFP Regulation: 5(2)(a)

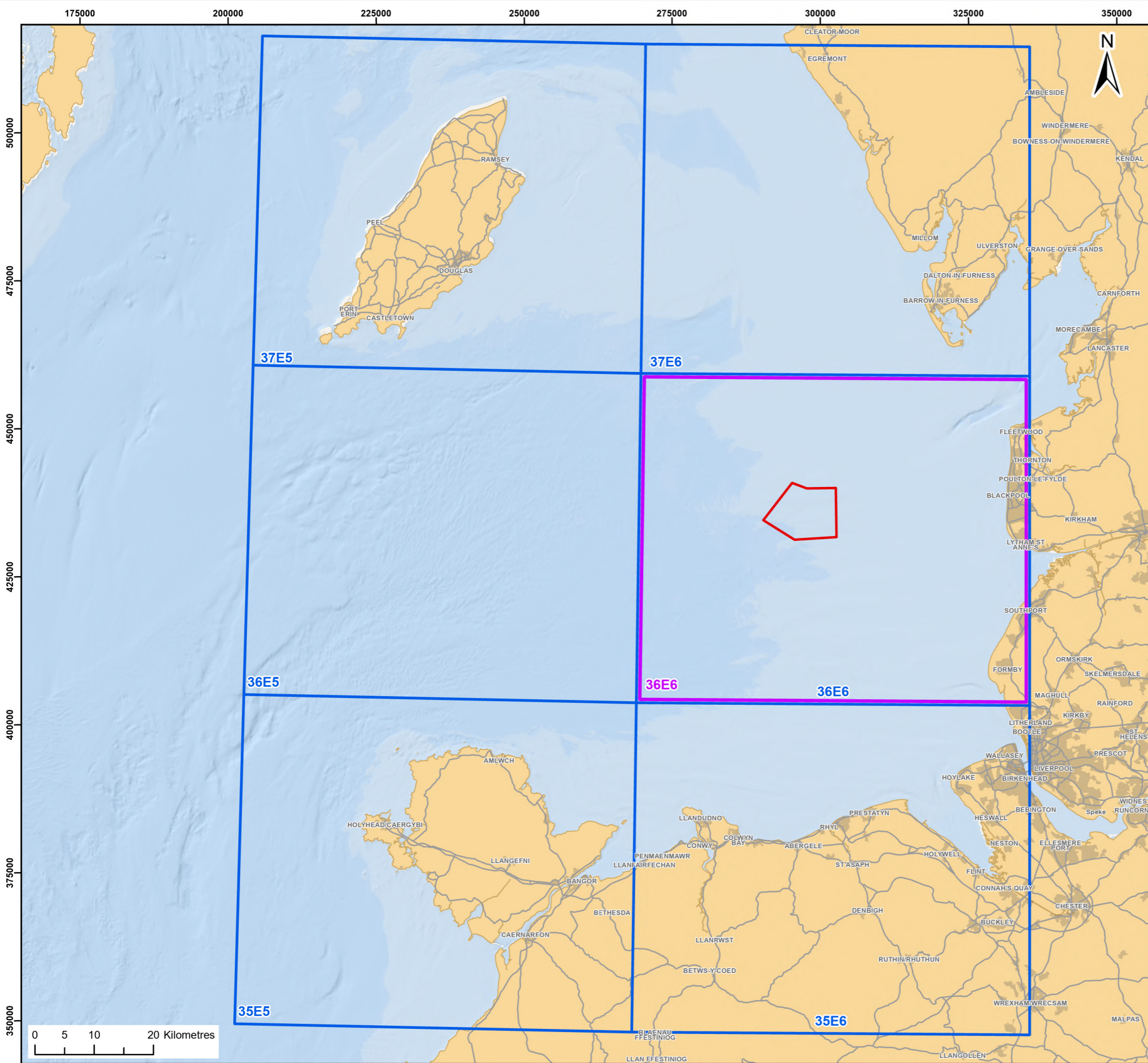
Rev 01



Document History

Doc No	MOR001-FLO-CON-ENV-FIG-1130	Rev	01
Alt Doc No	PC1165-RHD-ES-XX-DG-Z-0013		
Document Status	Approved for Use	Doc Date	May 2024
PINS Doc Ref	5.3.13	APFP Ref	5(2)(a)

Rev	Date	Doc Status	Originator	Reviewer	Approver	Modifications
01	May 2024	Approved for Use	Royal HaskoningDHV	Morecambe Offshore Windfarm Ltd	Morecambe Offshore Windfarm Ltd	n/a



- Legend:**
- Morecambe Offshore Windfarm Site
 - Local commercial fisheries study area: 36E6
 - Regional commercial fisheries study area: 37E6, 37E5, 36E6, 36E5, 35E5 and 35E6

© ICES, 2023; © Haskoning DHV UK Ltd, 2024; Contains OS data © Crown copyright and database right, 2024; Map data © OpenStreetMap contributors, Microsoft, Facebook, Inc. and its affiliates, Esri Community Maps contributors, Map layer by Esri, OceanWise, Esri, Garmin, NaturalVue

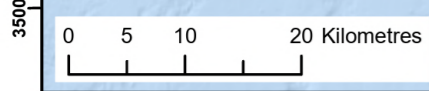
Report:
Morecambe Offshore Windfarm: Generation Assets Environmental Statement

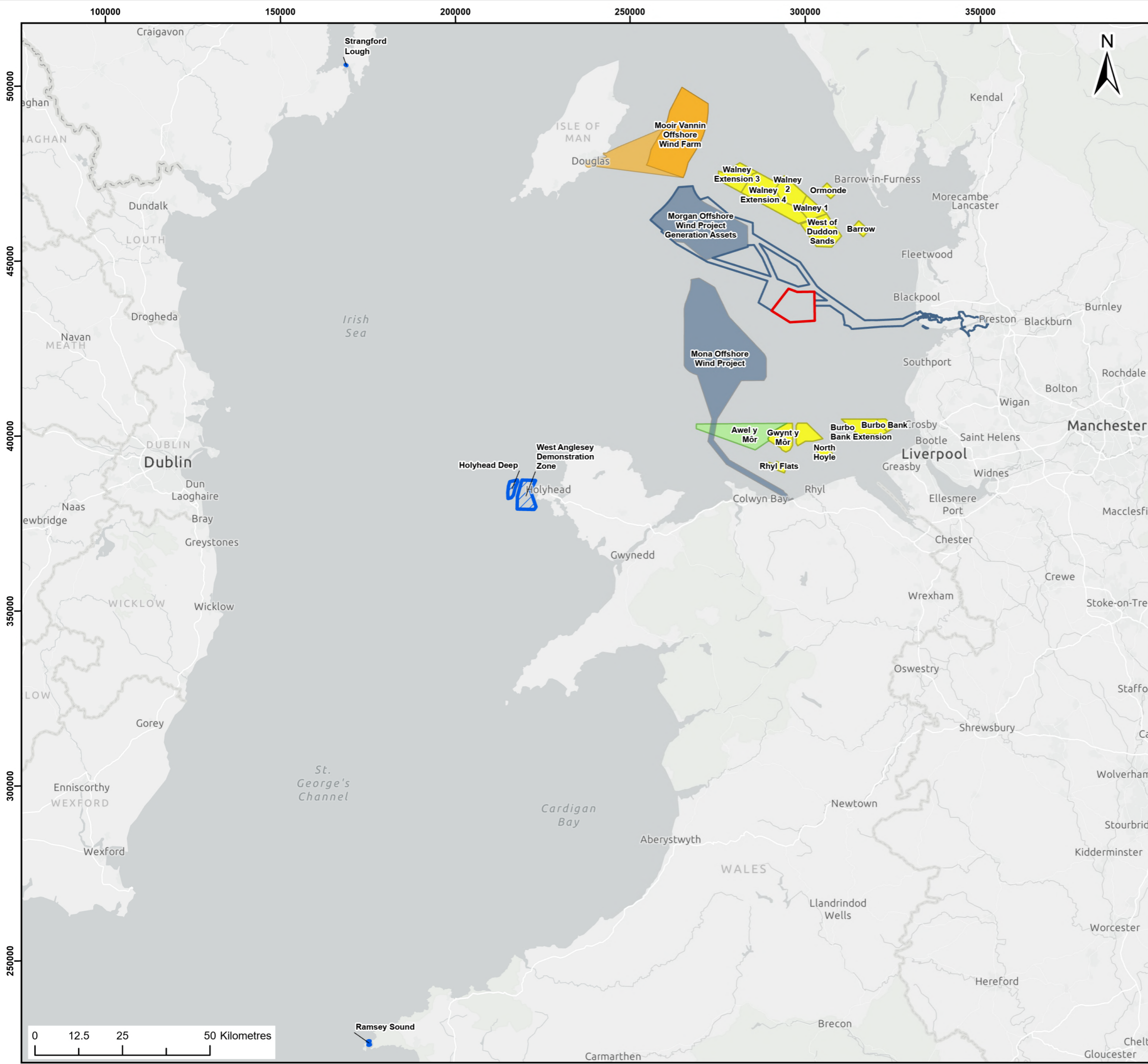
Title:
Commercial Fisheries Study Areas

Figure: 13.1 **Drawing No:** PC1165-RHD-ES-OF-DR-Z-0043

Revision:	Date:	Drawn:	Checked:	Size:	Scale:
P01	12/07/2023	JT	GC	A3	1:650,000
P02	23/04/2024	JH	SB	A3	1:650,000

Co-ordinate system: WGS 1984 UTM Zone 30N





Legend:

- Morecambe Offshore Windfarm Site
- Morgan and Morecambe Offshore Wind Farms: Transmission Assets (In Planning)
- Tidal Stream Site

Windfarm status

- Fully commissioned
- Consented
- In Planning
- Concept / Early planning

© TCE, 2024; © Haskoning DHV UK Ltd, 2024; Contains OS data © Crown copyright and database right, 2024; Esri UK, Esri, TomTom, Garmin, Foursquare, FAO, METI/NASA, USGS, Map data © OpenStreetMap contributors, Microsoft, Facebook, Inc. and its affiliates, Esri Community Maps contributors, Map layer by Esri

Report:
Morecambe Offshore Windfarm: Generation Assets Environmental Statement

Title:
Other plans, projects and activities included in the Cumulative Effects Assessment for commercial fisheries

Figure: 13.2 Drawing No: PC1165-RHD-ES-OF-DR-Z-0114

Revision:	Date:	Drawn:	Checked:	Size:	Scale:
P01	14/02/2024	JH	SB	A3	1:1,100,000
P02	23/04/2024	JH	SB	A3	1:1,100,000

Co-ordinate system: WGS 1984 UTM Zone 30N

